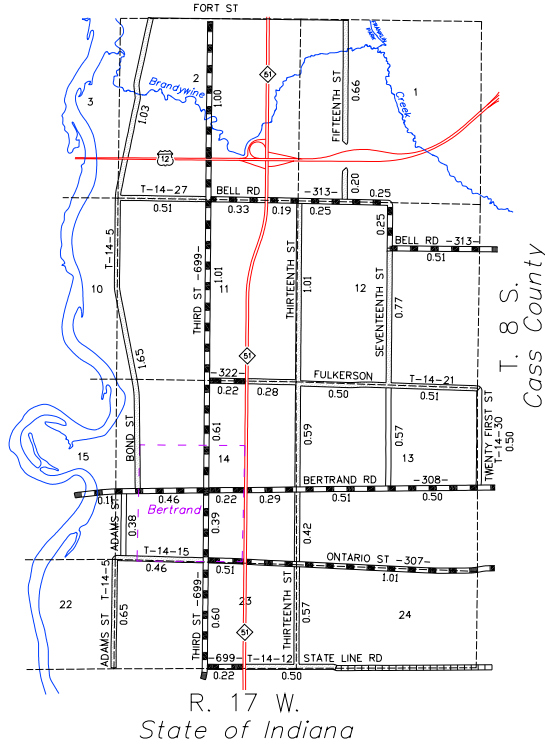


FOR NORTH NILES, SEE PAGE 14-(1)



LEGEND

- INTERSTATE HIGHWAY
- STATE HIGHWAY
- COUNTY ROAD; PRIMARY SYSTEM (PAVED)
- COUNTY ROAD; LOCAL SYSTEM (PAVED)
- COUNTY ROAD; LOCAL SYSTEM (UNPAVED)
- PRIVATE ROAD
- PUBLIC ROAD (NOT OPEN)
- ADJACENT COUNTY ROAD
- RAILROADS

PRIMARY ROAD SYSTEM IS 9.44 MILES  
 LOCAL ROAD SYSTEM IS 11.76 MILES

NILES TOWNSHIP

BERRIEN COUNTY  
 ROAD COMMISSION  
 BENTON HARBOR, MICHIGAN

BRIAN Q. BERNDT, ENGINEER MANAGER  
 SCALE: 1"=2000' DATE: October, 2008