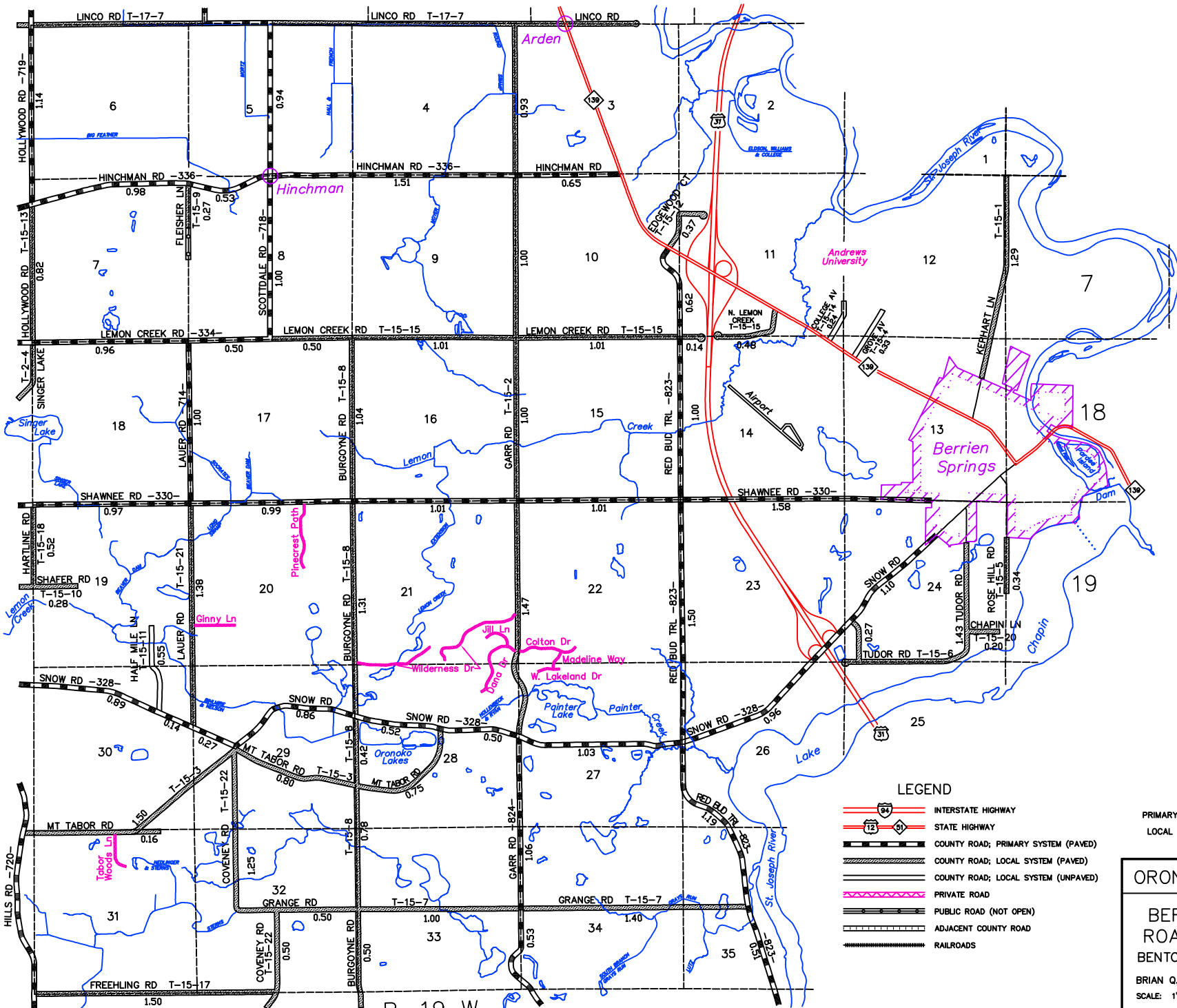


T. 6 S.

R. 19 W.



LEGEND

- INTERSTATE HIGHWAY
- STATE HIGHWAY
- COUNTY ROAD; PRIMARY SYSTEM (PAVED)
- COUNTY ROAD; LOCAL SYSTEM (PAVED)
- COUNTY ROAD; LOCAL SYSTEM (UNPAVED)
- PRIVATE ROAD
- PUBLIC ROAD (NOT OPEN)
- ADJACENT COUNTY ROAD
- RAILROADS

PRIMARY ROAD SYSTEM IS 27.45 MILES
 LOCAL ROAD SYSTEM IS 29.24 MILES

ORONOKO TOWNSHIP

BERRIEN COUNTY
 ROAD COMMISSION
 BENTON HARBOR, MICHIGAN

BRIAN Q. BERNDT, ENGINEER MANAGER
 SCALE: 1"=2000' DATE: January, 2010
 No. 15