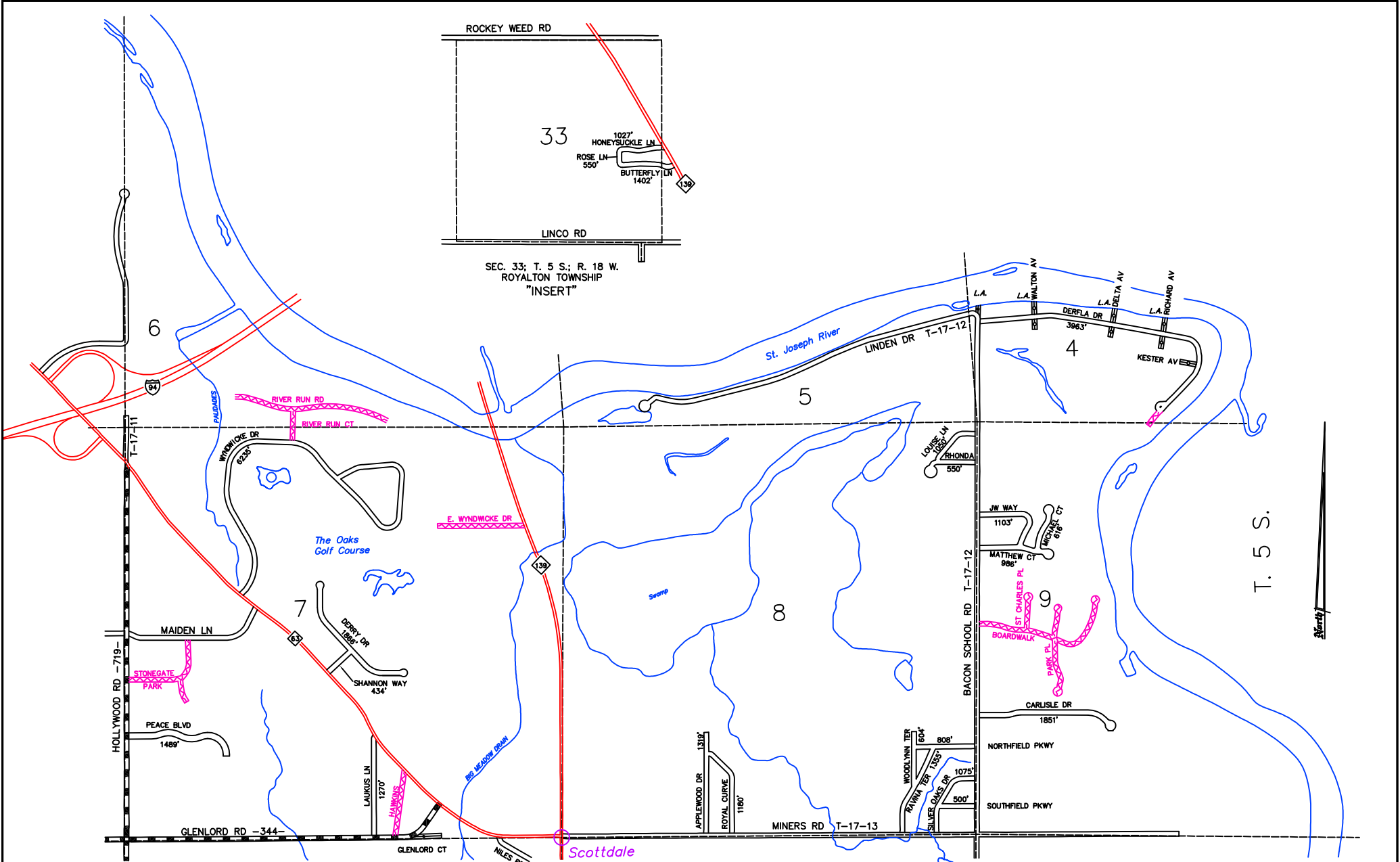


SEC. 33; T. 5 S.; R. 18 W.
ROYALTON TOWNSHIP
"INSERT"



Scottdale

- LEGEND**
- INTERSTATE HIGHWAY
 - STATE HIGHWAY
 - COUNTY ROAD; PRIMARY SYSTEM
 - COUNTY ROAD; LOCAL SYSTEM
 - PRIVATE ROAD
 - PUBLIC ROAD (NOT OPEN)
 - ADJACENT COUNTY ROAD
 - RAILROADS

R. 18 W.

LOCAL ROAD SYSTEM TOTAL FEET 31,233 EQUALS 5.92 MILES

ROYALTON TOWNSHIP

BERRIEN COUNTY
ROAD COMMISSION
BENTON HARBOR, MICHIGAN

BRIAN Q. BERNDT, ENGINEER MANAGER
SCALE: 1"=800' DATE: January, 2010
No. 17 A