

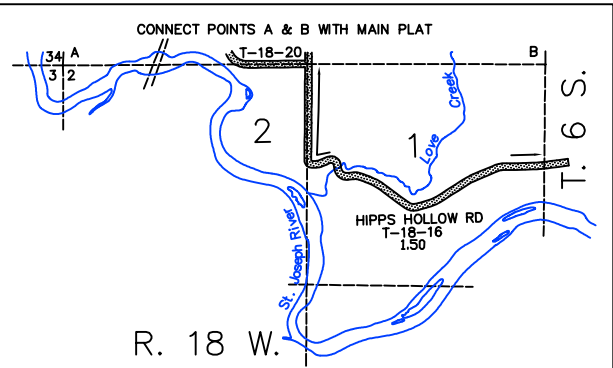
- LEGEND**
- INTERSTATE HIGHWAY
 - STATE HIGHWAY
 - COUNTY ROAD; PRIMARY SYSTEM (PAVED)
 - COUNTY ROAD; LOCAL SYSTEM (PAVED)
 - COUNTY ROAD; LOCAL SYSTEM (UNPAVED)
 - PRIVATE ROAD
 - PUBLIC ROAD (NOT OPEN)
 - ADJACENT COUNTY ROAD
 - RAILROADS

PRIMARY ROAD SYSTEM IS 22.95 MILES
 LOCAL ROAD SYSTEM IS 22.99 MILES

SODUS TOWNSHIP

BERRIEN COUNTY
 ROAD COMMISSION
 BENTON HARBOR, MICHIGAN

BRIAN Q. BERNDT, ENGINEER MANAGER
 SCALE: 1"=2000' DATE: January, 2010
 No. 18



R. 18 W.

R. 18 W.